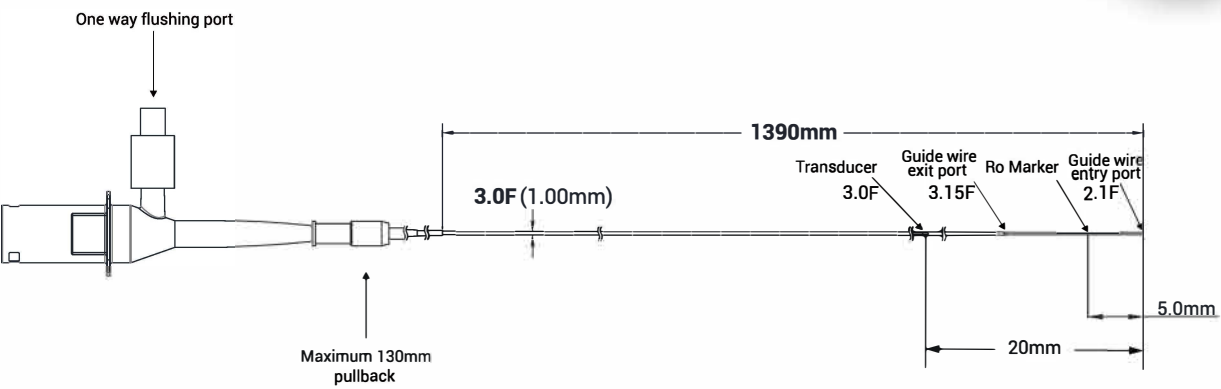


- Single board pullback device with robust design
- Long 13 cm, smooth automatic pullbacks
enhance accurate vessel and lesion measurements
- Integrated A/C conversion chip,
minimize signal interference on the IVUS image



TJ001

Transducer	Single Crystal Composite
Bandwidth	>80%
Central Frequency	50MHz
Axial Resolution	20µm
Maximum Imaging Diameter	20mm

Tip To Transducer Length	20mm
Pullback Length	13cm
Pullback Speed	0.5,1mm/s
Guide Catheter Compatibility	5F
Guide Wire Compatibility (Rapid Exchange)	≤ 0.014"

Crystal and Ultrawide Vision



SonoScape Medical Corp.
2F, 12th Building, Shenzhen Software Park Phase II, Keji Middle 2nd Road,
Nanshan District, Shenzhen 518057, Guangdong, China
Tel: +86-755-26722890 Fax: +86-755-26722850
Email: market@sonoscape.net www.sonoscape.com

© 2023 SonoScape Medical Corp.
All rights are reserved.
SonoScape Medical reserves the right to change the above
information and discontinue any product at any time
without prior notification and will not be liable for any
consequences resulting from the use of this publication.

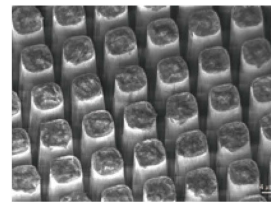
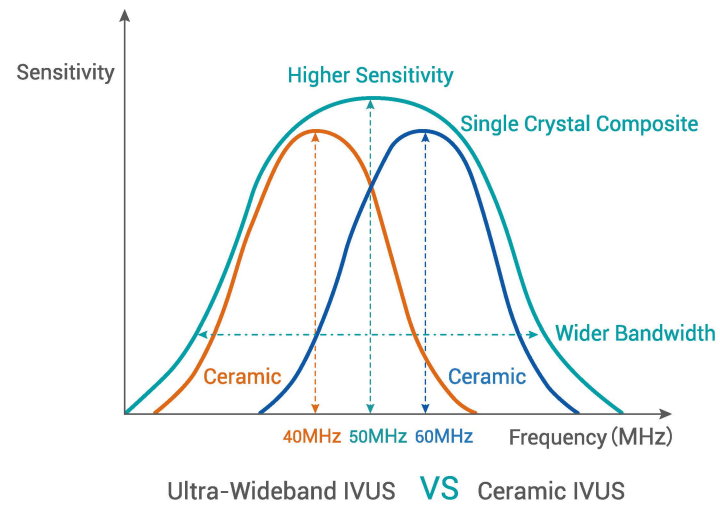
U-V1020240520

TJ001
Disposable Intravascular
Ultrasound Diagnostic
Catheter

No Compromise on Resolution nor Penetration

Seamless Workflow with Exceptional Deliverability

- Single crystal composite transducer offering higher sensitivity and wider bandwidth

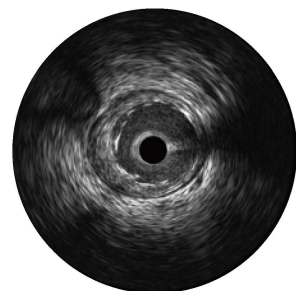


Single Crystal Composite transducer
Bandwidth > 80%

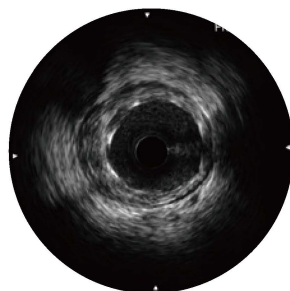


Ceramic PZT transducer
Bandwidth 40%

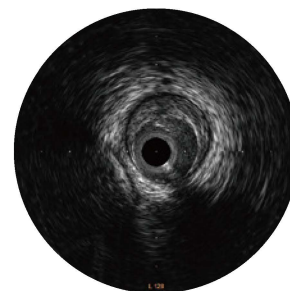
- Ultrawide bandwidth with frequency range from 20MHz to 80MHz
Better resolution and deeper penetration, works for diverse vessels



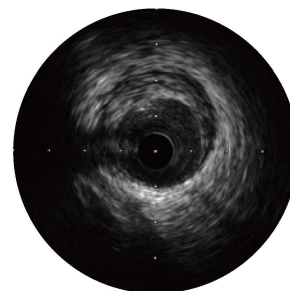
SonoScape IVUS



Ceramic IVUS



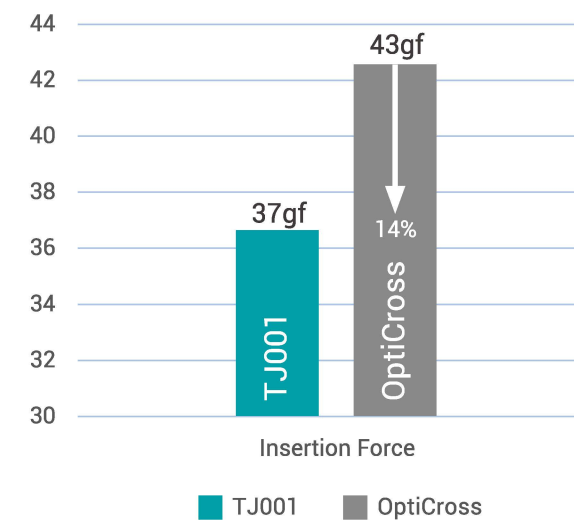
SonoScape IVUS



Ceramic IVUS

- More stent struts details on SonoScape IVUS.
- Side branch vessels are clearly recognizable through deeper penetration, while no compromise on good resolution.

- Conical imaging window reduces insertion forces improve the catheter deliverability



Data on SonoScape Lab.



- Low profile with 3.0Fr body and 2.1Fr tip entry, to facilitate into narrow vessels

